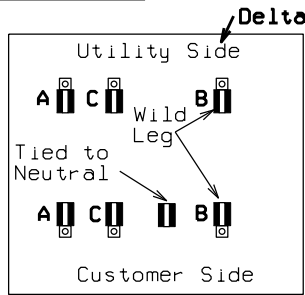
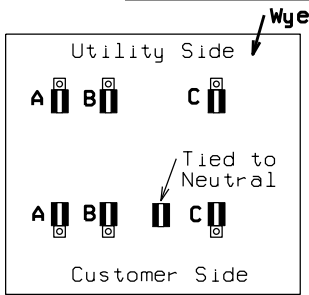


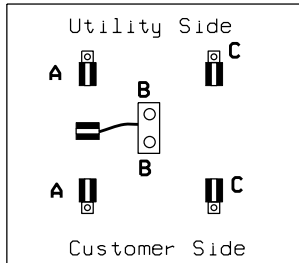
## VIEW OF METER SOCKETS



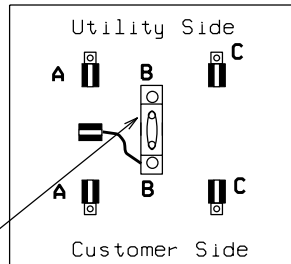
### 7 Jaw Meter Socket

Used for:  
 120/208 4-wire 3 Ø wye  
 277/480 4-wire 3 Ø wye  
 120/240 4-wire 3 Ø delta

For 120/240 4-wire 3 Ø the far right side shall be connected to the wild leg. This conductor shall be identified with orange tape or marked by other approved means.



5 Jaw Meter Socket  
 Used for 240 Volt  
 3-wire 3 Ø Delta  
 The center conductor  
 is the grounded  
 conductor.



5 Jaw Meter Socket  
 Used for 480 Volt  
 3-wire 3 Ø Delta  
 The insulated slide  
 bar is used to  
 disconnect the third  
 phase, if necessary.

Insulated  
 Slide  
 bar

### Basic Meter Socket Requirements

1. Ringless style, 200 Amp minimum rated, clamp type jaws, 600 volt rated, sealable, and provided with protective shield covering the jaws.
2. The meter sockets shall have a manual by-pass that is designed so the cover cannot be installed with the by-pass closed.
3. The phase designations are commonly used designations by electricians. They do not indicate clockwise or counterclockwise rotation.
4. This page is labeled using customer electrical design standards of B phase wild or grounded B phase. Unfortunately, the utility industry calls this C phase.
5. Mounting at 6' required for UPPCo (requires an extension for UG installations).

### APPROVED METER SOCKETS

	7 Jaw 120/208 277/480 120/240	7 Jaw 120/208 277/480 120/240	5 Jaw 3-Wire 3 Phase
Type	UG Pedestal	OH Only	OH OR UG
Similar To	p. 2-2	p. 2-4	p. 2-4 & 3-2
Midwest	_____	UTH7203T-MEP	U42552-N0-H0
Landis&Gyr (Siemens)	40407P-9WI	40007(HQ-7)	9804-8592 (5 NDU)
Square D (Durham)	_____	UTH7203T-SQD	_____
Milbank	U9107-0 & S3488 (ext.)	U9700-XL U9701-XL	U8624-RXL
Cutler Hammer	_____	UTH7203T-CH	_____
Durham	_____	UTH7203T	_____

Revised: 03/10