

Standard Termination Pad Bus Drilling Specifications

B & C clearances needed for this conductor route.

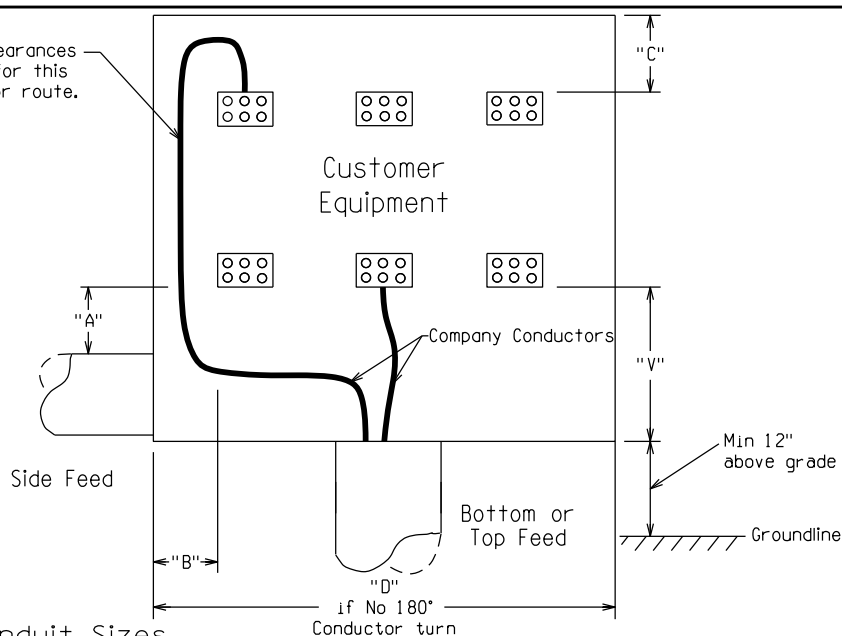


TABLE 1 [5]

Standard Conductor and Conduit Sizes

Switchgear (Amps)	Phases	No. & Size Conductors Per Phase Aluminum	No. of Conduits and size (in.)		"V"	"A"	"B"	"C"	"D"
			Riser Only	Conduit Run					
200	1	1-3/0	1-2"	1-2"	6.5"	6.5"	4"	6.5"	8"
200	3	1-3/0	1-2"	1-3"	6.5"	6.5"	4"	6.5"	10"
400	1	1-350	1-3"	1-4"	12"	12"	5"	12"	9"
400	3	1-350	1-4"	1-4"	12"	12"	5"	12"	11"
600	1	2-350	1-4"	2-4"	18"	18"	8"	16"	10"
600	3	2-350	2-4"	2-4"	18"	18"	8"	16"	12"
800	1	2-700+	2-4"	2-4"	24"	24"	10"	18"	15"
800	3	2-700+	2-4"	2-4"	24"	24"	10"	18"	19"
1000	3	3-700	3-4"	3-4"	30"	30"	12"	20"	26"
1200	3	4-700	3-4"	4-4"	30"	30"	14"	22"	35"
1600	3	5-700	4-4"	5-4"	36"	36"	-	-	40"
2000	3	6-700	6-4"	6-4"	42"	42"	-	-	40"
2500	3	5-1000 Cu	5-6"	5-6"	42"	42"	-	-	40"
3000	3	7-1000 Cu	7-6"	7-6"	42"	42"	-	-	40"

+ Std. is 350 neutral

NOTES:

1. This page deals exclusively with Company conductors.
2. The Company uses 90°C conductor; therefore, the Company cannot terminate on customer main disconnects. (NEC 110.14)
3. "V" dimension for 3/0 and 350 comes from NEC Table 312.6(B).
4. "B" dimension based on NEC 312.6(A). "C" dimension based on NEC 312.6(B). 180 degree cable bends are only allowed by the Company through 600 Amp. Consult the Company if you have such a situation with a larger entrance.
5. If these minimum termination dimensions cannot be met, it may be necessary to use a separate termination enclosure per page 3-7.
6. This table gives standard Company conductor sizes. Customers must size their service entrance conductor based on the NEC. Note things such as Table 310.16 on general conductor ampacities, Table 310.15(B)(2)(a) on derating for more than three current-carrying cables in a raceway, duct configurations for over 2KV cables in Figure 310.60, Article 376 and 378 on raceway fill, etc.
7. Consult the Company when planning 2000 Amp and larger switchgear.
8. "D" Dimension based on terminator widths and 1" phase spacing. This applies only to single direction termination. If some conductors must turn a 180 degree to terminate, add dimension "B" as necessary.
9. One additional conduit shall be required where potential problems may occur under blacktop, concrete, or building structure. Additional considerations shall be given for rocky conditions.
10. 3" acceptable if 320A pedestal.

Revised: 03/10