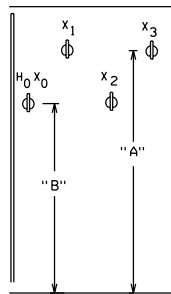


FRONT VIEW OF  
PADMOUNT TRANSFORMER



Transformer Size	"A"	"B"
75-150 KVA	"33"	"27"
225-500 KVA	"39"	"31"
750-2500 KVA	"54"	"46"

NOTES:

1. **Approval must be obtained from the Company to use this metering option.** It is only available from dedicated (no other customers possible) three-phase padmounted transformers. **The service size must be 800 amp or larger.** With Company approval, however, 277/480 can get down to 400 amp. The service can only be run to one building [in WI COMM 16.230(4)].
2. The customer shall own, install and maintain the service. The Company will terminate the transformer end of the customer service conductors, if possible. Let the Company know the size and number of service conductors.
3. The above drawing is a diagram showing the metering. See page 3-10 for details on padmount siting.
4. The meter socket will be provided by the Company at cost where it is mounted on the padmount transformer. If it is installed on the building wall, it will be provided by the customer and installed by the customer. The maximum distance between the padmount and the building-mounted meter socket is 25 feet.
5. Mounting the meter socket on a free-standing pedestal is not acceptable.
6. The Company will ground the meter socket.
7. **The customer equipment grounding bond cannot occur in the padmount transformer per NEC 250.24(D).**

**Instrument Transformer-Rated Meter Sockets  
(for CT installations)**

13 Terminal for 120/208 & 277/480 (co. stock #136-1160)

**Manufacturer**

Square D (Anchor)	TSS13-H0-SR1
Meter Devices	3040A-13
Milbank	UC7449-XL
Erickson	W-340
Landis & Gyr (Siemens)	9837-8503
Durham	USTS13-2B
Cutler Hammer	USTS13-2B-CH
Midwest	USTS13-2B-MEP
Square D	USTS13-2B-SQD

Revised: 03/10