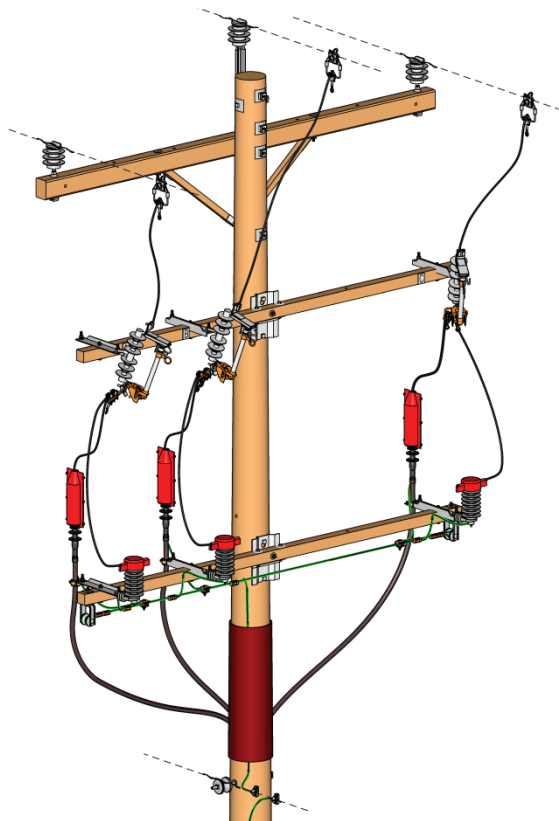
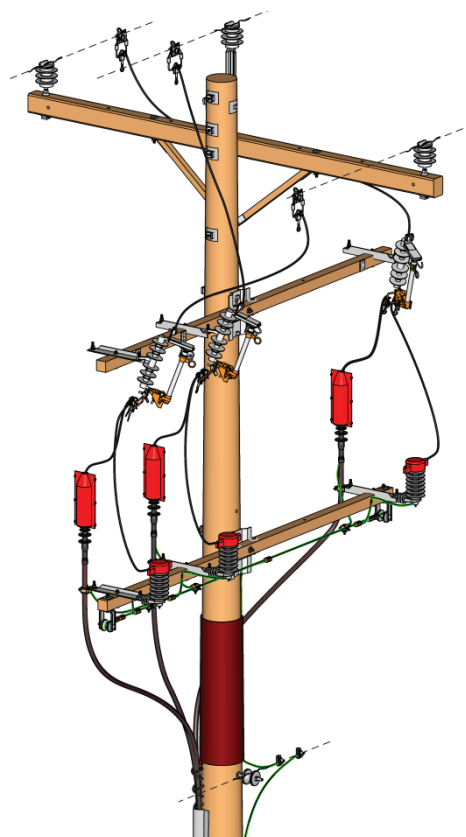


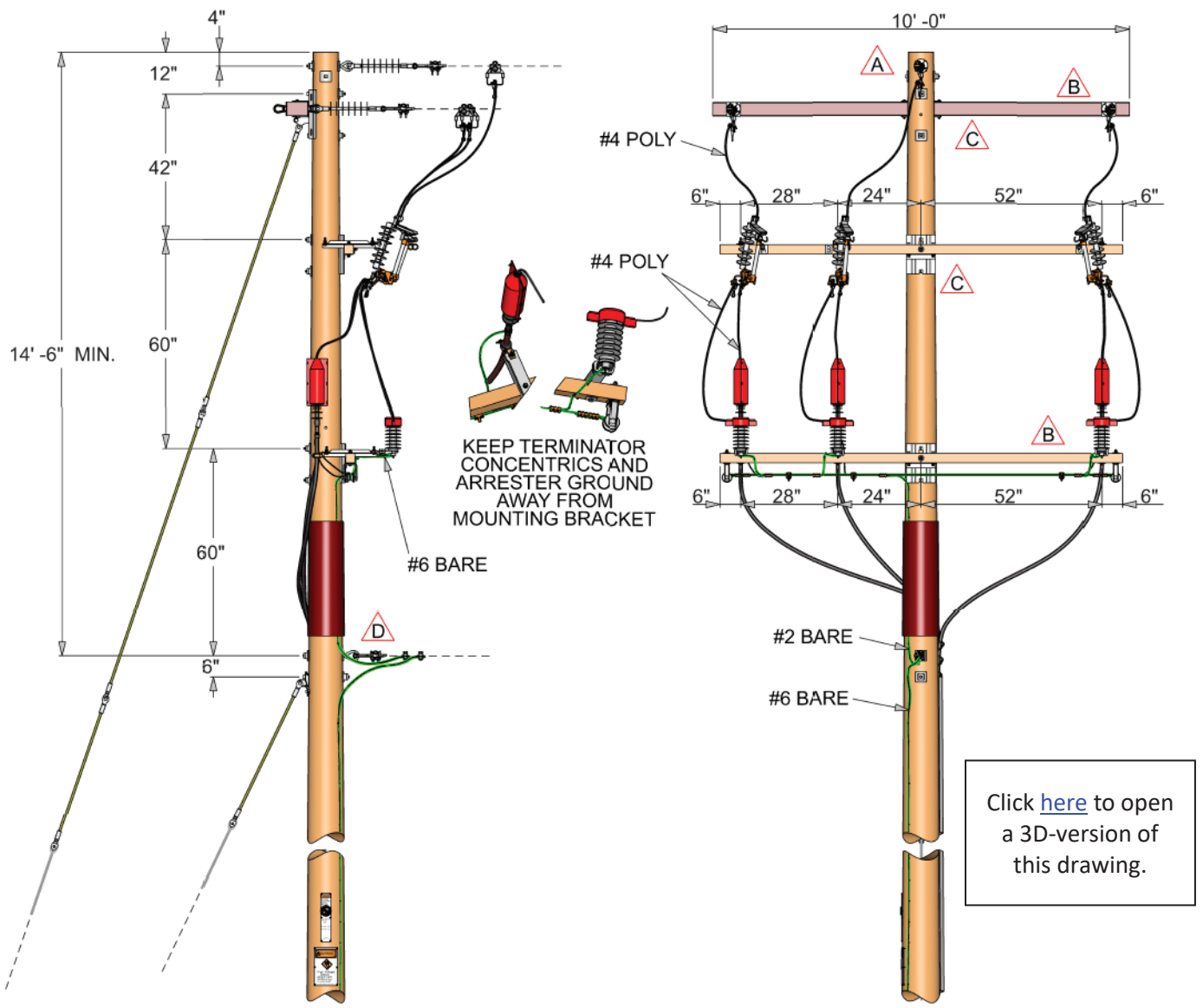
WPS: C01A & URP3-1
WE ENERGIES: 110-13 & 110-41



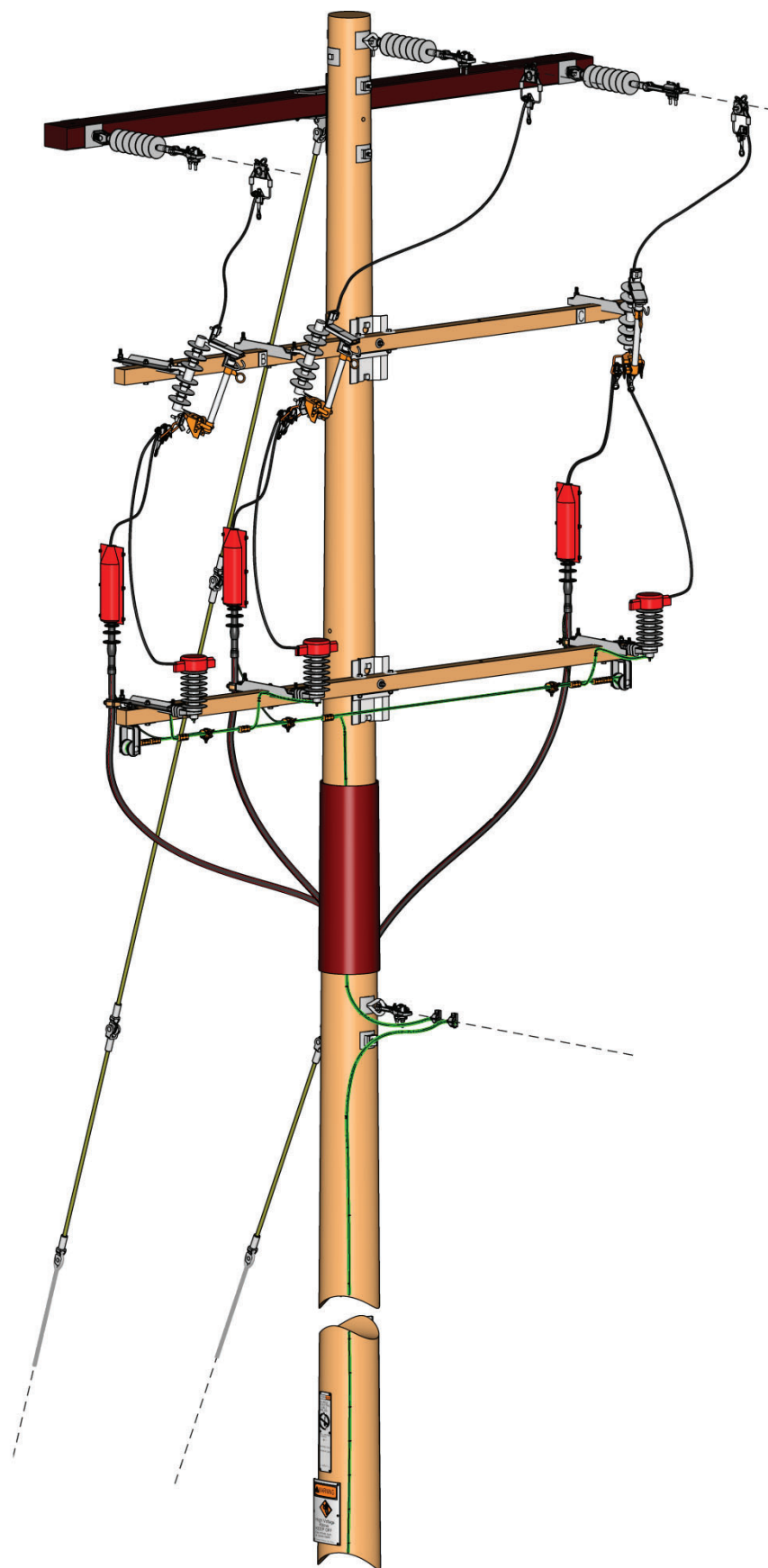
Preferred – Equipment Arms Parallel to Phase Arm – Truck Accessible



Alternate Construction – Equipment Arms Parallel to Line Conductors;
Cutouts and Surge Arresters Should Face Road Side



WPS: C07AFG & URP3-1
WE ENERGIES: 110-14 & 110-41



WISCONSIN PUBLIC SERVICE					URP3-1
MATERIAL		NO. REQ.	MATERIAL		NO. REQ.
ARRESTER-18KV-RISER		3	POLE WRAP		1
ARRESTER, 18KV, RISER	124-1681	1	GUARD, ANIMAL, POLE WRAP	147-2380	1
WIRE, #6 STR CU	T133-0925	2 FT	NAIL, ROOFING	342-8656	0.108 LB
STIRRUP-XX		3	BUSARM-APITONG		1
CONNECTOR, HOTLINE	143-1102	1	PREASSEMBLED BUS ARM	105-3700	1
STIRRUP, BOLTED	HOT145X	1	BOLT, MACHINE, 5/8"	MCH421X	2
3PH CO-100/200A-XX		1	NUT, LOCK, 5/8"	160-3910	2
CUTOFF, FUSE, 100A	118-1483	3	WASHER, CURVED, 3"	T135-9500	2
FUSE, 100A CUTOFF	VARIES	3	SWITCHARM-APITONG		1
GUARD-U-XX			PREASSEMBLED SWITCH ARM	144-0014	1
GUARD, U-GUARD, 10'	T134-45XX	4	BOLT, MACHINE, 5/8"	MCH421X	2
NAIL, ROOFING	342-8656	0.036 LB	NUT, LOCK, 5/8"	160-3910	2
SCREW, LAG	342-8711	56	WASHER, CURVED, 3"	T135-9500	2
SIGN, ELEC SAFETY, UG	138-0524	1	RISER-CUTOFF-GRD-STRP		3
JUMPER-URP3 #1		1	STIRRUP, CUTOFF, GROUNDING	134-5049	1
CONNECTOR, BOLTED	VARIABLE	1	CONNECTOR, HOTLINE	143-1102	2
CONNECTOR, CU, 1-BOLT	139-1119	3	TRM-CBL-3-#1		1
CONNECTOR, H-TAP, 1/0 TO #6	T135-2055	3	GUARD, ANIMAL, TERM COVER	147-2386	3
SCREW, LAG	342-8712	1	TERMINATOR, #1 SOL, 25KV	T134-7740	3
STAPLE, 2"	T135-7980	10			
CONNECTOR, H-TAP, 1/0 TO #2	T135-2050	1			
CONNECTOR, H-TAP, #2 TO #4	T135-2080	3			
SUPPORT, CABLE RISER, 3-#1	147-8859	1			
CLAMP, CABLE, 1.1"-1.5"	143-2611	3			
WIRE, #2 STR CU	T133-1035	25 FT			
WIRE, #4 STR CU POLY	T133-0977	38 FT			

WE ENERGIES MATERIAL			
DESCRIPTION	CONSTRUCTION UNIT	QTY.	MATERIAL NO.
110-41 COMMON MATERIAL			
RISER 3PH 300 AMP 8KV, 15KV, & 25KV			
WIRE, #2 STR, STRD, CU, HD, BARE	CC2B	25 FT	103-3301
WIRE, #4 STR, CU, XLPE	CC46	38 FT	103-3239
WIRE, #6 STR, CU	CC6B	6 FT	T133-0925
CONNECTOR, HOTLINE	CLH1/01/0B	9	143-1102
CONNECTOR, CU, 1-BOLT	CN2B1/0	3	139-1119
CONNECTOR, CU, 1/0 TO #6 & #2 STR	CNT2/2CA	4	139-3075
CONNECTOR, CRIMPET, #2 SOL TO #4 STR	CNT24CB	3	139-2905
CONNECTOR, BOLTED VISE	CNWG4/0	1	T134-1772
FRAME, AL, 3 DIGIT, HORIZONTAL	FRA3H	1	138-1725
FRAME, AL, 5 DIGIT, VERTICAL	FRA5V	1	138-1873
GUARD, RSR, U, 3" x 10'	GURS103P	3	150-1216
SCREW, LAG, 1/4" x 2", HCR	*	42	342-8711
GUARD, RSR, U, 3" x 10'	GURS103PB	1	150-1216
SCREW, LAG, 1/4" x 2", HCR	*	1	342-8711
GUARD, WILDLIFE, POLY TERM COVER	GUWPTC	3	147-2386
ASSEMBLY, CROSSARM, BUS ARM, 10'	PREASMBUSARM10FT	1	105-3700
BOLT, MACHINE, 5/8", 12"	*	2	158-4391
CONTINUED ON NEXT PAGE			

WE ENERGIES MATERIAL			
DESCRIPTION	CONSTRUCTION UNIT	QTY.	MATERIAL NO.
110-41 COMMON MATERIAL cont.			
NUT, LOCK, 5/8"	*	2	160-3910
WASHER, CURVED, 3"	*	2	T135-9500
ASSEMBLY, CROSSARM, SWITCHARM, 10'	PREASMSWITCHARM10FT	1	144-0014
BOLT, MACHINE, 5/8", 12"	*	2	158-4391
NUT, LOCK, 5/8"	*	2	160-3910
WASHER, CURVED, 3"	*	2	T135-9500
TERM, POLYMER, 1 POLE, LABOR	PT1	3	D00-6920
RISER, 3-C, PRI OR SUB, LABOR	RS3P	1	D00-1910
SIGN, PLASTIC, "A"	SGPTA	1	138-3001
SIGN, PLASTIC, "B"	SGPTB	1	138-3019
SIGN, PLASTIC, "C"	SGPTC	1	138-3027
SIGN, ELEC SAFETY, UG	SGWBC	1	138-0524
NAIL, ROOFING, 1-1/2"	*	0.036 LB	342-8656
STIRRUP, GROUNDING, PIN CONN	SPGD	3	134-5049
STIRRUP, BOLTED, 336	SPW336	3	T134-7383
STAPLE, 2"	STPL2	10	T135-7980
SUPPORT, CABLE RISER, 3-#1	SUCB26	1	147-8859
SCREW, LAG, 1/4" x 4", HCR	*	1	342-8712
TERMINATOR, #1 SOL, 25KV	TNC251	3	134-5075
GUARD, ANIMAL, POLE WRAP	WRWP2536	1	147-2380
NAIL, ROOFING, 1-1/2"	*	0.108 LB	342-8656

15KV #2 SOL AL		110-41.1	
ARRESTER, SURGE, DISTRIBUTION, 10KV	ARD10	3	124-1451
CABLE, CN/JKT, 15KV, #2 SOL AL	CBCJ152	120 FT	101-9640
CLAMP, CABLE, 0.8"-1.25"	CLCB23/015	3	143-2600
CONNECTOR, PIN TERM, 6", #2 SOL	CNPT62	3	139-4535
CUTOUT, 100A, 27KV	CUF271N	3	118-1483

8KV #1 SOL AL		110-41.2	
ARRESTER, SURGE, DISTRIBUTION, 6KV	ARD6	3	124-1290
CABLE, CN/JKT, 25KV, #1 SOL AL	CBCJ251	120 FT	101-9690
CLAMP, CABLE, 1.1"-1.5"	CLCB23/028	3	143-2611
CONNECTOR, PIN TERM, 6", #1 SOL	CNPT612	3	139-4538
CUTOUT, 100A, 15KV	CUF81N	3	118-1351

15KV #1 SOL AL		110-41.3	
ARRESTER, SURGE, DISTRIBUTION, 10KV	ARD10	3	124-1451
CABLE, CN/JKT, 25KV, #1 SOL AL	CBCJ251	120 FT	101-9690
CLAMP, CABLE, 1.1"-1.5"	CLCB23/028	3	143-2611
CONNECTOR, PIN TERM, 6", #1 SOL	CNPT612	3	139-4538
CUTOUT, 100A, 27KV	CUF271N	3	118-1483

25KV #1 SOL AL		110-41.5	
ARRESTER, SURGE, DISTRIBUTION, 18KV	ARD18R	3	124-1681
CABLE, CN/JKT, 25KV, #1 SOL AL	CBCJ251	120 FT	101-9690
CLAMP, CABLE, 1.1"-1.5"	CLCB23/028	3	143-2611
CONNECTOR, PIN TERM, 6", #1 SOL	CNPT612	3	139-4538
CUTOUT, 100A, 27KV	CUF271N	3	118-1483