

Table of Contents

B01 / We#

TWO PHASE TANGENT ARM, 6 PIN ARM

B02 / We#

TWO PHASE 5-20 DEGREES, DOUBLE 6 PIN ARMS

B03 / We#

TWO PHASE 20-60 DEGREES, VERTICAL

B04 / We#

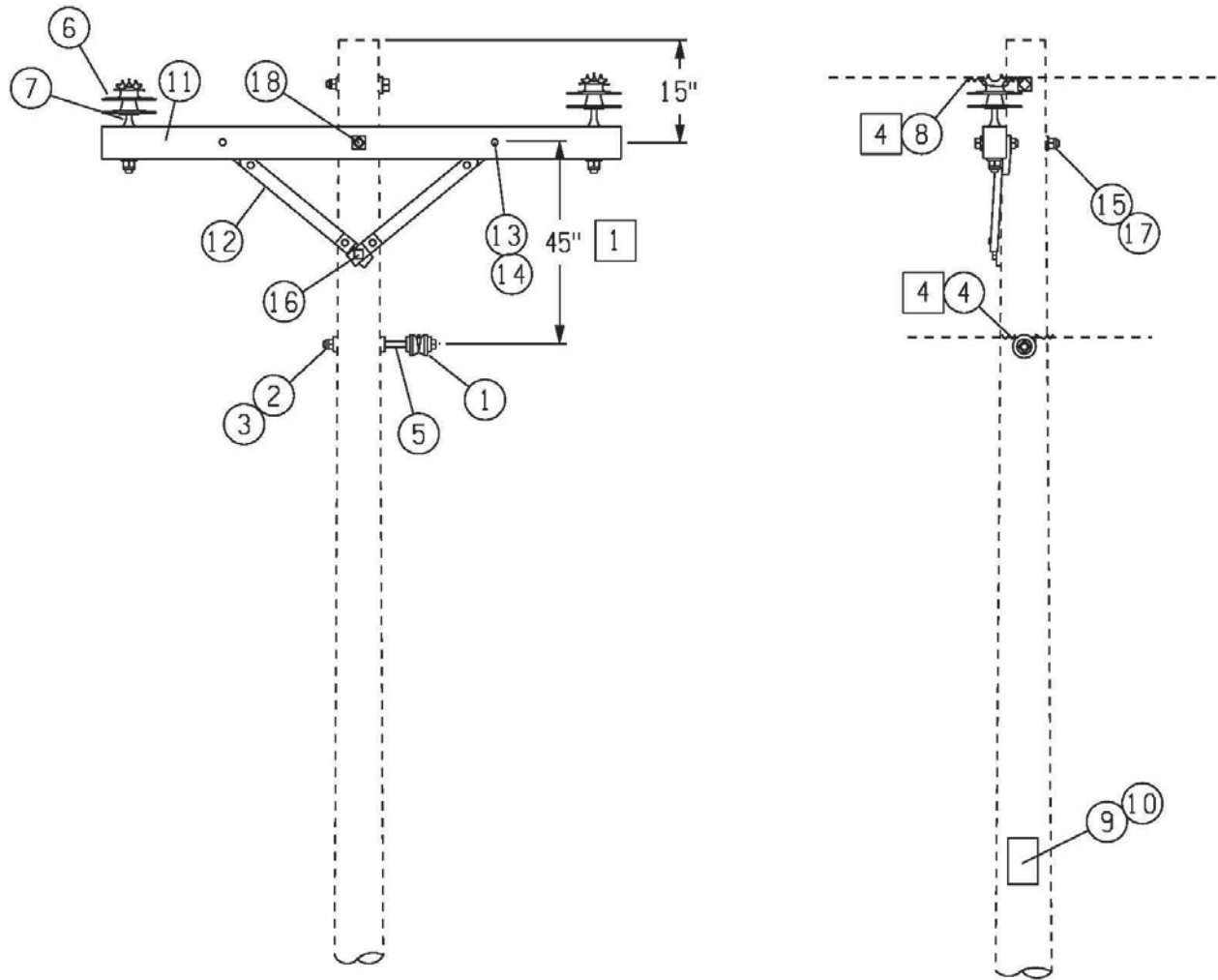
TWO PHASE 60-90 DEGREES, DOUBLE DEADEND, VERTICAL

B07 / We#

TWO PHASE DEADEND, ARM

B08 / We#

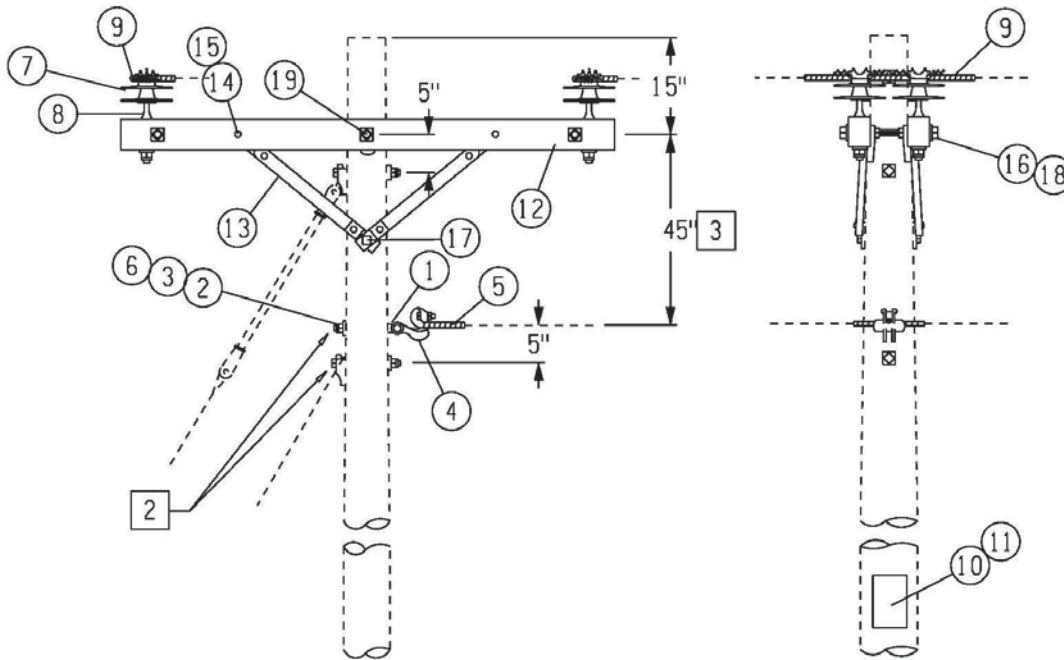
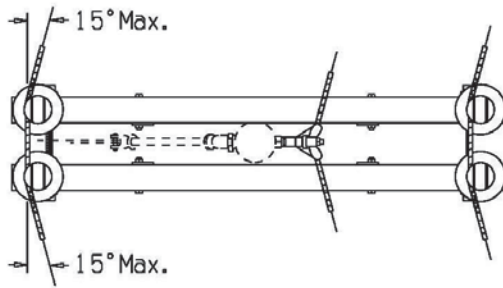
TWO PHASE DOUBLE DEADEND, 0-30 DEGREES



□ Notes:

1. Provide adequate pole height and locate neutral as specified on other Standards if this is a future transformer setting (for extra long spans, see sag section).
2. A pair of pole keys is required on 795 AA for angles larger than 2 degrees and on long span 4/0 and 336.4 ACSR for angles larger than 1 degree.
3. Refer to [Std C21](#) when using 795 AA, 4/0 ACSR and 336.4 ACSR for angles 3 through 5 degrees.
4. See [Std OHC50](#) for proper use of preformed ties.

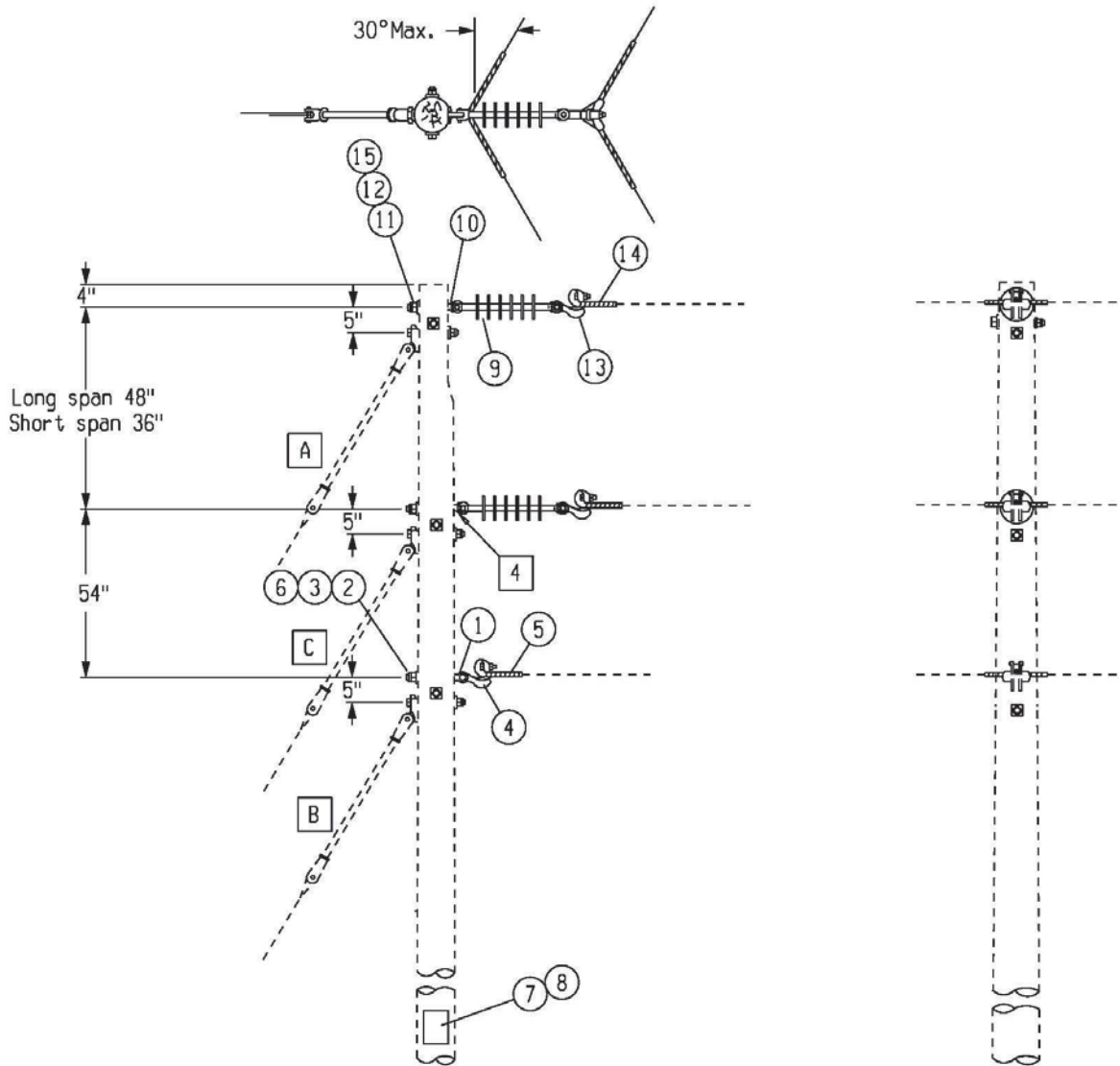
ITEM	MATERIAL	NO.REQ.	ITEM	MATERIAL	NO.REQ.
	ASSEMBLY: NEUT-TAN	1	9	NAIL, ROOFING, 1-1/2"	135-4420
1	INSULATOR, SPOOL	135-4240	10	SIGN, ELEC SAFETY	135-5460
2	NUT, LOCK, 5/8" DIAMETER	135-4480		ASSEMBLY: XARM-6PIN-2W	1
3	WASHER, SQUARE, 3/4"	135-9400	11	CROSSARM, POLE, 6 PIN	134-0151
4	TIE, SPOOL, VARIABLE	SPL196X	12	BRACE, CROSSARM, 28"	134-1260
5	BOLT, UPSET DOUBLE	UPD560X	13	BOLT, CARRIAGE, GALVA	135-0109
	ASSEMBLY: PIN-XARM	2	14	NUT, LOCK, 3/8" MF	135-4460
6	INSULATOR, PIN	134-4955	15	NUT, LOCK, 5/8" DIAMETER	135-4480
7	PIN, INSULATOR	135-4516	16	SCREW, LAG, 1/2" DIAMETER	135-5300
8	TIE, DISTRIBUTION	TOP198X	17	WASHER, SQUARE, 3/4"	135-9400
	ASSEMBLY: SIGN HV	1	18	BOLT, MACHINE, 5/8"	MCH421X



Notes:

1. Use this construction for all conductors through 1/0 ACSR and 2/0 Cu on all angles 5 to 20 degrees. With larger conductors, use the construction shown on Stds B03 and [C03](#).
2. See [Section G Standards](#) for guying information.
3. Provide adequate pole height and locate neutral as specified on other Standards if this is a future transformer setting.
4. Use armor rod for phase conductors. To protect the neutral, use armor rod on ACSR and line guard on AA.
5. See [Std OHC50](#) for proper use of preformed ties.

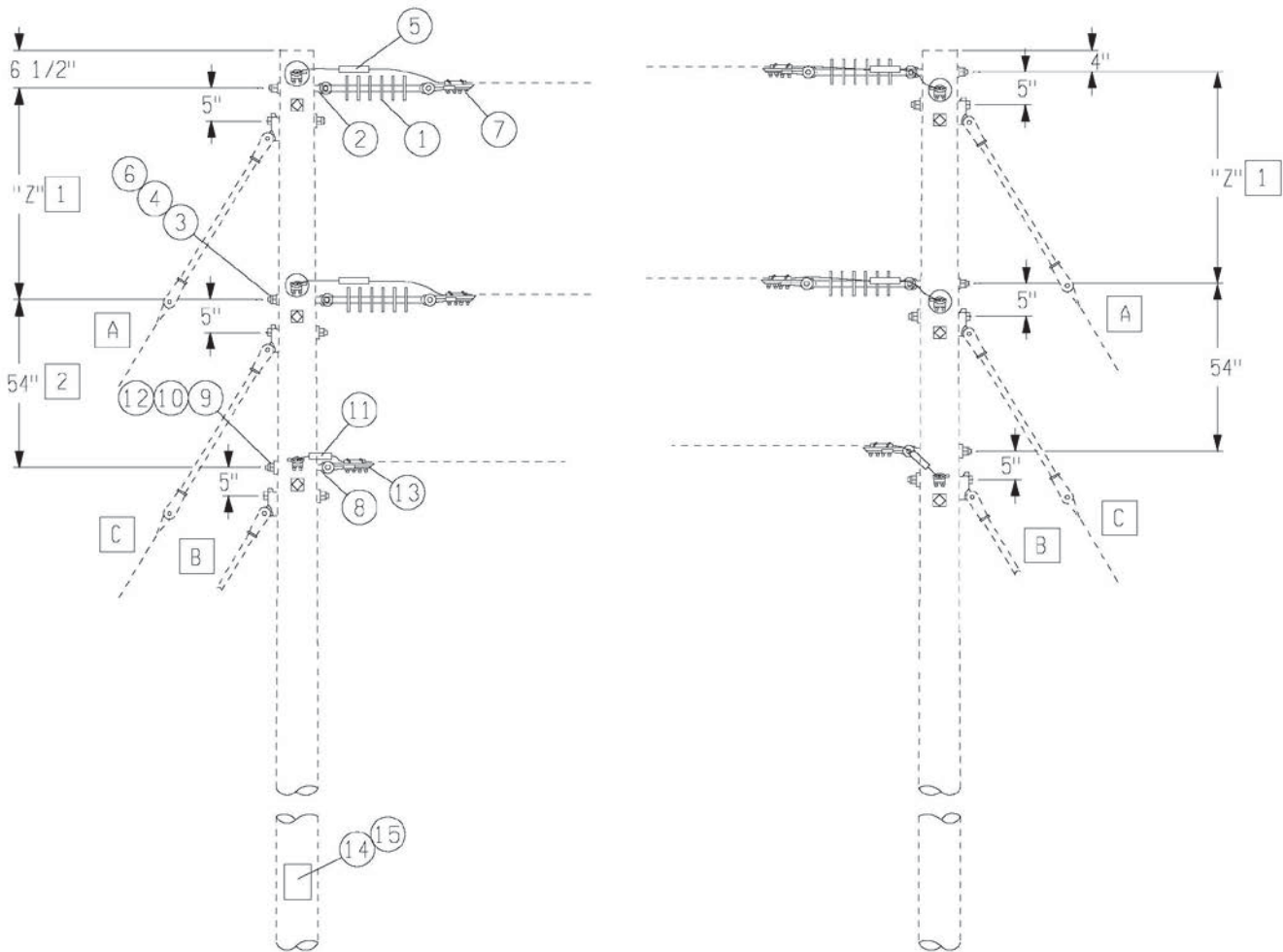
ITEM	MATERIAL	NO.REQ.	ITEM	MATERIAL	NO.REQ.
	ASSEMBLY: NEUT-ANG	1	10	NAIL, ROOFING, 1-1/2"	135-4420
1	EYELET, 5/8" BOLT DI	135-3550	11	SIGN, ELEC SAFETY	135-5460
2	NUT, LOCK, 5/8" DIAMETER	135-4480		ASSEMBLY: XARM-6PIN-2W	1
3	WASHER, CURVED, 3/4"	135-9500	12	CROSSARM, POLE, 6 PIN	134-0151
4	CLAMP, ANGLE, VARIABLE	ANG186X	13	BRACE, CROSSARM, 28"	134-1260
5	ARMOR ROD/LINE GUARD	ARM100X	14	BOLT, CARRIAGE, GALVA	135-0109
6	BOLT, MACHINE, 5/8"	MCH421X	15	NUT, LOCK, 3/8" MF	135-4460
	ASSEMBLY: PIN-XARM-DBL	2	16	NUT, LOCK, 5/8" DIAMETER	135-4480
7	INSULATOR, PIN	134-4955	17	SCREW, LAG, 1/2" DIAMETER	135-5300
8	PIN, INSULATOR	135-4516	18	WASHER, SQUARE, 3/4"	135-9400
9	TIE, DOUBLE SIDE, V	SDE193X	19	BOLT, DOUBLE ARMING	DBA320X
	ASSEMBLY: SIGN HV	1			



□ Notes:

1. This construction is for 1/0 ACSR or smaller with angles 20 to 60 degrees; for 4/0 ACSR or larger with angles 5-60 degrees. For all conductor sizes with angles greater than 60 degrees, see [Std C04](#).
2. Use line guard on AA conductors and armor rod on ACSR conductors.
3. See [Section G Standards](#) for guying requirements. Add guys in order indicated above (A, B, C) as the guy tension chart requires. For more than one phase, A & B are both required.
4. For 795 AA conductor, use a 3/4" machine bolt with a 3/4" eye nut.

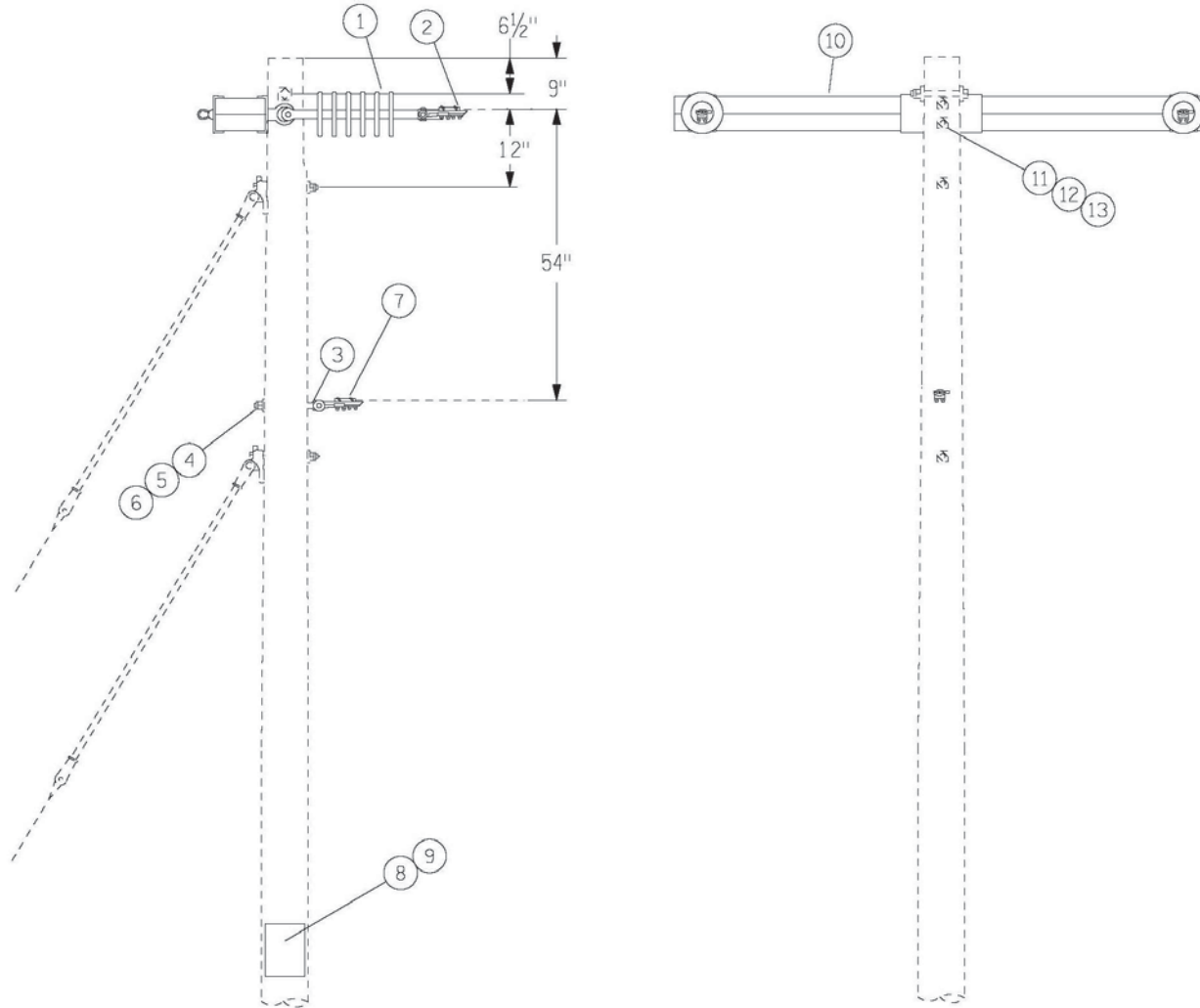
ITEM	MATERIAL	NO.REQ.	ITEM	MATERIAL	NO.REQ.
	ASSEMBLY: NEUT-ANG	1	8	SIGN, ELEC SAFETY	135-5460
1	EYELET, 5/8" BOLT DI	135-3550	1	ASSEMBLY: SUS	2
2	NUT, LOCK, 5/8" DIAMETER	135-4480	1	9	INSULATOR, DEADEND S
3	WASHER, CURVED, 3/4"	135-9500	1	10	EYELET, 5/8" BOLT DI
4	CLAMP, ANGLE, VARIABLE	ANG186X	1	11	NUT, LOCK, 5/8" DIAMETER
5	ARMOR ROD/LINE GUARD	ARM100X	1	12	WASHER, CURVED, 3/4"
6	BOLT, MACHINE, 5/8"	MCH421X	1	13	CLAMP, ANGLE, VARIABLE
	ASSEMBLY: SIGN HV	1	14	ARMOR ROD/LINE GUARD	
7	NAIL, ROOFING, 1-1/2"	135-4420	0.001	15	BOLT, MACHINE, 5/8"
					MCH421X



□ Notes:

1. "Z" shall be 48" for long span construction and 36" for short span construction.
2. See Sag [Stds OSAG200 thru OSAG225](#) for neutral tensions when putting up new conductor.
3. If there is a possibility the main line will continue at a later date, it shall be deadended a span beyond. If the line cannot be deadended a span beyond, shoulder eye bolts shall be installed in the positions from which the line will be extended.
4. Add guys in order indicated above (A, B, C) as the guy tension calculation chart requires them. See [Section G Standards](#) for information. For more than one phase, A & B are both required.
5. Install stirrups and hot line clamps and connect a separate copper jumper when this is a sectionalizing point and conductor is #2 ACSR equivalent or smaller. When sectionalizing is not required and conductor size and type being joined are the same, use of the loop splice is preferred over a connector.

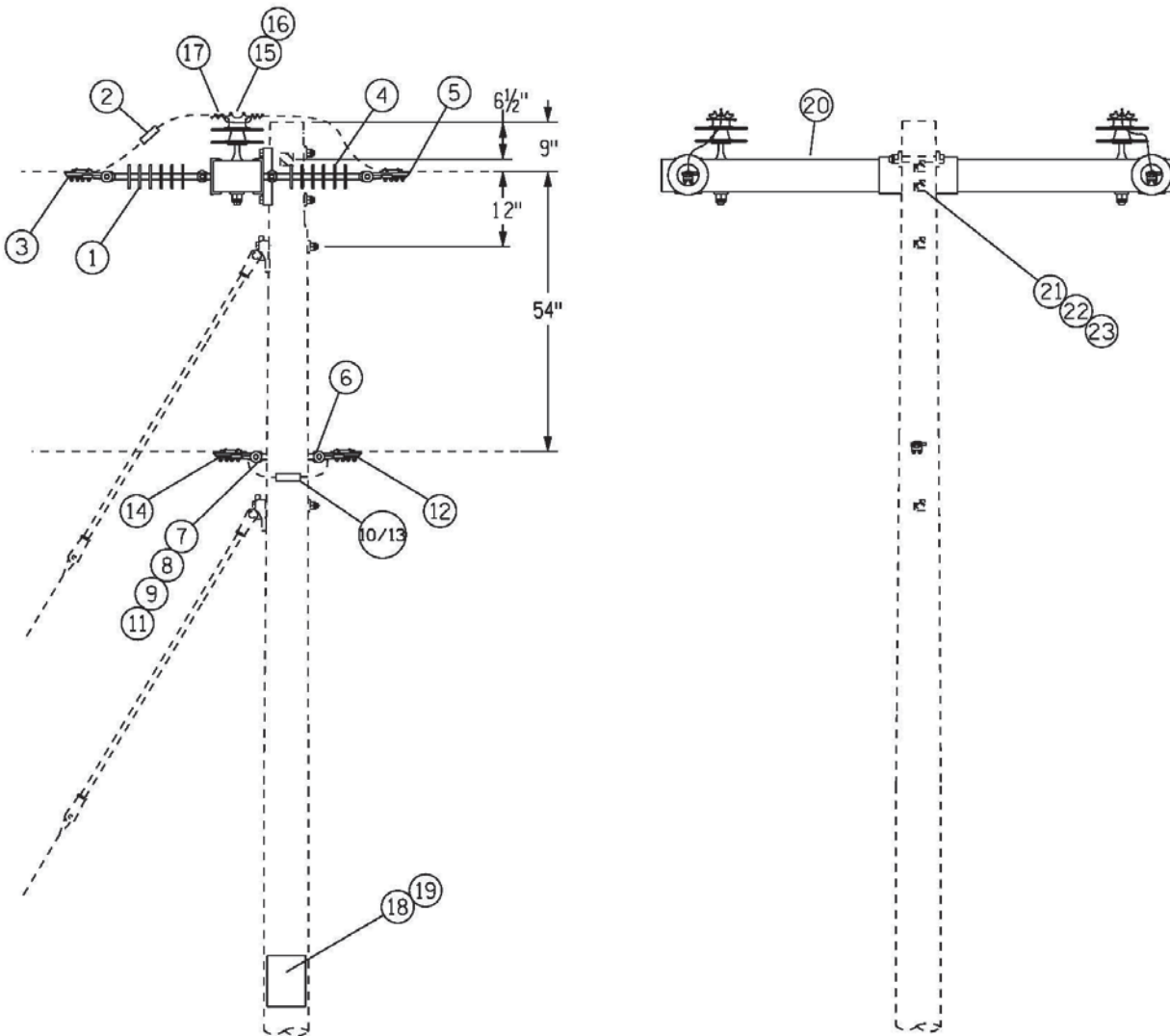
ITEM	MATERIAL	NO.REQ.	ITEM	MATERIAL	NO.REQ.
	ASSEMBLY: DDE-ANG	4	8	EYELET, 5/8" BOLT DI	135-3550
1	INSULATOR, DEADEND S	1	9	NUT, LOCK, 5/8" DIAMETER	135-4480
2	EYELET, 5/8" BOLT DI	1	10	WASHER, CURVED, 3/4"	135-9500
3	NUT, LOCK, 5/8" DIAMETER	1	11	SPLICE, LOOP	COM164X
4	WASHER, CURVED, 3/4"	1	12	BOLT, MACHINE, 5/8"	MCH421X
5	SPLICE, LOOP	0.5	13	CLAMP, SUSPENSION	STD192X
6	BOLT, MACHINE, 5/8"	1		ASSEMBLY: SIGN HV	1
7	CLAMP, SUSPENSION	1	14	NAIL, ROOFING, 1-1/2"	135-4420
	ASSEMBLY: NEUT-DDE	2	15	SIGN, ELEC SAFETY	135-5460



□ Notes:

1. The Apitong deadend arm (without arm guys) has adequate strength to deadend a conductor on each end with a maximum guying tension of 3500 lbs.
2. See [Std OHC60](#) to determine appropriate suspension clamp for use on arm construction.
3. Tighten all hardware after installing in case of wood shrinkage.

ITEM	MATERIAL	NO.REQ.	ITEM	MATERIAL	NO.REQ.
	ASSEMBLY: DE-FGXARM	2		ASSEMBLY: SIGN HV	1
1	INSULATOR, DEADEND S	1	8	NAIL, ROOFING, 1-1/2"	0.001
2	CLAMP, SUSPENSION	1	9	SIGN, ELEC SAFETY	1
	ASSEMBLY: NEUT-DE	1		ASSEMBLY: XARM-APITONG-2	1
3	EYELET, 5/8", BOLT DI	1	10	CROSSARM, POLE, 3-3/4	1
4	NUT, LOCK, 5/8" DIA, 1	1	11	NUT, LOCK, 5/8" DIA, 1	2
5	WASHER, CURVED, 3/4"	1	12	WASHER, SQUARE, 3/4"	2
6	BOLT, MACHINE, 5/8"	1	13	BOLT, MACHINE, 5/8"	2
7	CLAMP, SUSPENSION	1			



□ Notes:

1. The Apitong Deadend Crossarm (without arm guys) has adequate strength to deadend a conductor on each end with a maximum guying tension of 3500 lbs.
2. See [Std OHC60](#) to determine appropriate suspension clamp for use on arm construction.
3. Tighten all hardware after installing in case of wood shrinkage.

ITEM	MATERIAL	NO.REQ.	ITEM	MATERIAL	NO.REQ.
	ASSEMBLY: DDE-FGXARM	2		ASSEMBLY: NUET-DE-BB-NP	1
1	INSULATOR, DEADEND 134-5200	1	13	SPLICE, LOOP COM164X	0.5
2	SPLICE, LOOP COM164X	1	14	CLAMP, SUSPENSION STD192X	1
3	CLAMP, SUSPENSION STD192X	1		ASSEMBLY: PIN-XARM	2
	ASSEMBLY: DE-FGXARM	2	15	INSULATOR, PIN 134-4955	1
4	INSULATOR, DEADEND 134-5200	1	16	PIN, INSULATOR 135-4516	1
5	CLAMP, SUSPENSION STD192X	1	17	TIE, DISTRIBUTION TOP198X	1
	ASSEMBLY: NEUT-DE-BB	1		ASSEMBLY: SIGN HV	1
6	EYELET, 5/8" BOLT DI 135-3550	1	18	NAIL, ROOFING, 1-1/2" 135-4420	0.001
7	NUT, EYE, ROUND, 5/8" 135-4425	1	19	SIGN, ELEC SAFETY 135-5460	1
8	NUT, LOCK, 5/8" DIAMETER 135-4480	1		ASSEMBLY: XARM-APITONG-2	1
9	WASHER, CURVED, 3/4" 135-9500	2	20	CROSSARM, POLE, 3-3/4" 134-0240	1
10	SPLICE, LOOP COM164X	0.5	21	NUT, LOCK, 5/8" DIAMETER 135-4480	2
11	BOLT, MACHINE, 5/8" MCH421X	1	22	WASHER, SQUARE, 3/4" 135-9400	2
12	CLAMP, SUSPENSION STD192X	1	23	BOLT, MACHINE, 5/8" MCH421X	2